

# Stratodesk NoTouch Center

[www.stratodesk.com](http://www.stratodesk.com)

[contact@stratodesk.com](mailto:contact@stratodesk.com)

US:  +1 (415) 946 4029

EU:  +43 (463) 890298

NoTouch Center is the #1 endpoint management solution for VDI and IoT. Capable of managing your devices on premise or from the cloud, NoTouch Center is the only solution able to effectively manage x86 and ARM/Raspberry Pi based devices in the same environment.

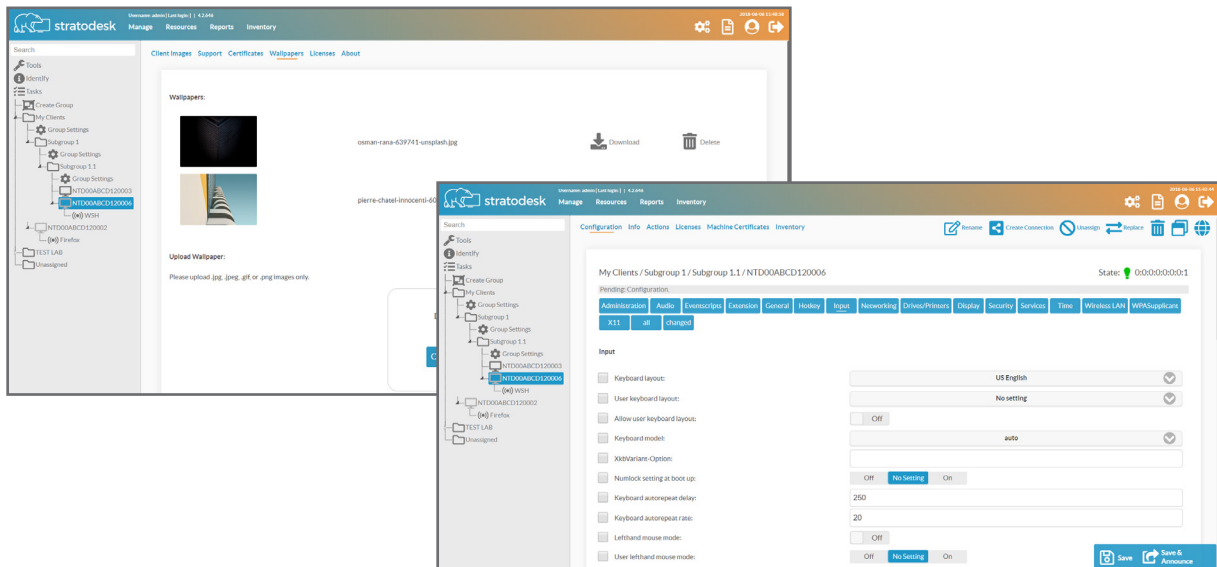


NoTouch is a registered trademark of Stratodesk Corp. All hardware and software names are brand names or registered trademarks of their respective manufacturers. Errors and omissions excepted. © 2018 Stratodesk Corp., all rights reserved.

## » NoTouch Center Profile

NoTouch Center is a browser based administration software that helps IT administrators manage, configure and update NoTouch PCs, Thin Clients, Laptops as well as ARM/Raspberry Pi devices all from one place. NoTouch Center provides full control over endpoints while aiding in compliance and protecting sensitive data. By supporting settings inheritance, groups can be created, configured and kept in sync easily. NoTouch Center supports multiple-user roles, monitoring, asset management, inventory, helpdesk and other features you would expect from an enterprise grade management system.

NoTouch Center reduces system administrator time and keeps your VDI or IoT environment operating at peak performance. It is also the only endpoint management solution able to run on premise or from the cloud. Our cloud based administration software, NoTouch Cloud, gives you the same control over your endpoints as NoTouch Center and comes with a host of added benefits, including automatically applied updates and cloud auto-enrollment.



## » Stratodesk Virtual Appliance: Client Hosting and VDI Management

The Stratodesk Virtual Appliance, with NoTouch Center included, simplifies your VDI architecture and streamlines VDI administration. This 64-bit, Linux-based appliance comes preconfigured to run in your preferred environment including VMware vSphere/ESXi, Citrix Hypervisor (formerly called XenServer), Nutanix AHV and Microsoft Hyper-V. Stratodesk's Virtual Appliance includes a pre-boot execution environment (PXE) used to bring up NoTouch OS on diskless machines. An

easy-to-use, web-based administration interface makes it easy to perform tasks such as updating endpoints and backing up the virtual appliance. Stratodesk Virtual Appliance can also store files locally for update distribution and network boot – no external database needed.

With PXE boot, you can also boot NoTouch in Live Mode on your machines, enabling BYOD, without erasing your devices' native operating systems.



# NoTouch Center Features and Benefits

## Central management

Easy to administer. Settings can be made with just one click. Efficient and user friendly.

## Management of X86 and ARM devices

Use NoTouch Center or NoTouch Cloud to manage your entire network of x86 and ARM devices, including Raspberry Pis and Workspace Hubs, from the cloud or from your on-premise VA

## Support for numerous operating systems

NoTouch Center can be installed on all versions of Windows Server and Linux.

## Pre-installed in the Stratodesk Virtual Appliance

NoTouch Center comes pre-installed in a virtual appliance for easy deployment and setup. The virtual appliance installs directly onto your server.

## PXE-server included in Virtual Appliance

Install NoTouch onto thousands of devices instantly. Enable installation onto diskless machines by booting directly from the network. Boot Live without overwriting native operating systems on endpoint devices.

## MSI installer

Install NoTouch via MSI installer and replace windows on endpoint devices.

## Auto-assign

Automatically enroll devices into your environment with Auto-assign.

## Easy wireless and LAN configuration

NoTouch supports wireless and LAN configurations to allow seamless interaction between devices and can connect to up to 4 VLANs.

## Group based administration and inheritance of settings

Clients moved into groups inherit settings from their new group in order to ensure efficient configuration and setup.

## Browser based

Access NoTouch Center from any device via web browser.

## Uniform user interface

NoTouch Desktop has the same look and feel across its entire product suite. Benefit from one intuitive user experience whether accessing NoTouch Center or the OS.

## Multiple-User Support and Rights Management

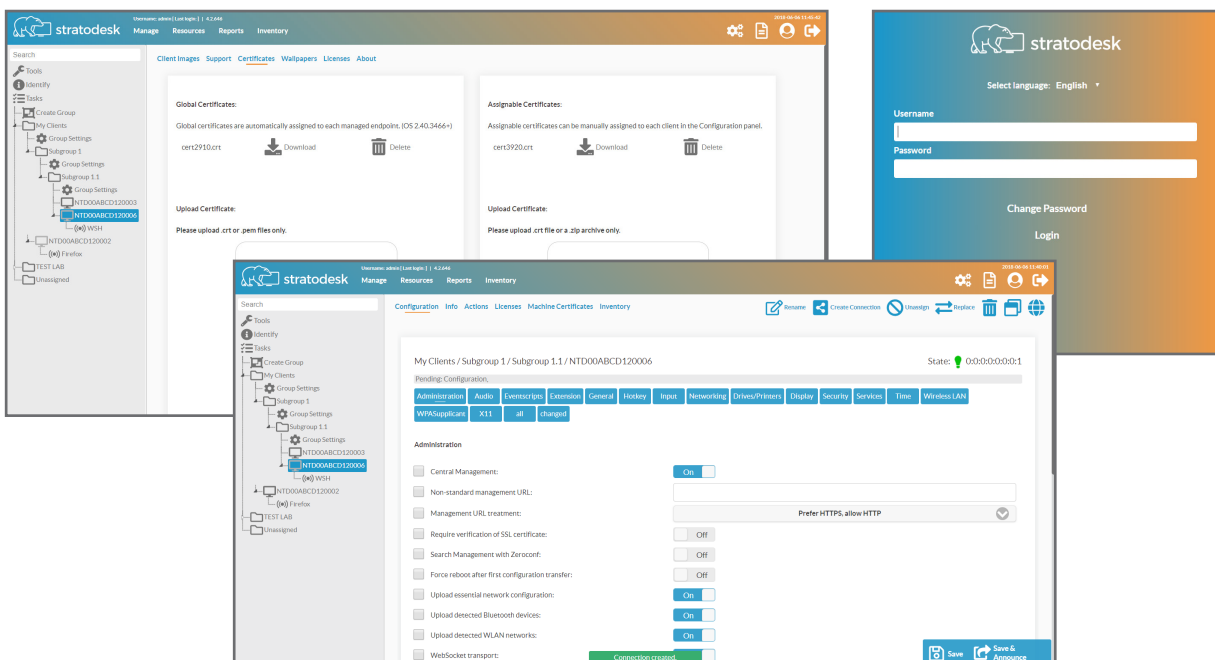
User management for diverse administration tasks and authorization areas.

## Supports Directory Services

Microsoft® Active Directory or Novell® eDirectory.

## Supports various databases

Use company wide databases (Oracle, My SQL). MySQL database is included, installed and configured by default.





# NoTouch Center Features and Benefits (cont'd)

## Real-Time Device Monitoring and Tactical Overview

The NoTouch Center dashboard shows a tactical overview of your system at a glance and enables you to easily drill down into important data like the system load, distribution of images, and article numbers.

## Reporting tool

With the flexible reporting tool you are able to analyze your system and use templates including hardware inventory lists. Reports can be generated and automatically sent via email.

## Asset management and peripheral inventory

Automatically capture all of your hardware information including USB devices, monitors and more. See your peripherals at a glance in one location.

## File hosting

NoTouch Center can host customer files including Certificates and desktop images in order to distribute them to client machines.

## Certificate handling

Centrally manage global and machine certificates with NoTouch Center. Easily drag and drop certificates from your desktop into NoTouch Center.

## Task automation

Automatically schedule periodic tasks or periodic script execution.

## Imprivata manageability

NoTouch Center supports Imprivata features and allows you to centrally manage Agent Type, Background Image, Certification of SSL, Debug Logging, and Auto-Hide Kiosk Login Screen.

## Authentication and Single Sign-On support

Enable authentication and Single Sign-On support with Imprivata, Evidian, Caradigm and others.

## Scripting engine

Although scripting is only needed in exceptional circumstances, NoTouch supports various scripting languages used to control endpoints.

By default, NoTouch Center comes with support for JavaScript, Python and Lua. The standard Java scripting interface JSR-223 [1][2] is used, allowing you to easily extend support for other languages such as: Ruby, Clojure and others that provide JSR-223 bindings.

## Customizable look and feel

Configure endpoints to have a quasi-invisible local GUI. Take users directly into a VDI session, or to a powerful local desktop with advanced branding capabilities for your organization.

## Auto discovery and auto grouping

Clients can be automatically assigned to a group based on subnets, hardware (MAC Addresses) location and ownership, visible bluetooth devices, user defined values and email addresses.

## Secure HTTPS/SSL based communication

Certificate based, encrypted communication between NoTouch Center and clients.

## Automated job scheduling and task planning

Job scheduling enables the system administrator to comfortably execute actions at predefined times without disrupting day-to-day operations.

## Automated remote actions

Shutdown, turn-on LAN, updates, and message sending to a specific device can be done remotely.

## Remote helpdesk

Mirror your desktop to VNC support in order to get accurate and real time technical support.

## Client identify

Find devices easily via user keystroke.

## Fast search and filter functions

Find desktops and designated attributes in an instant.

## Highly scalable

NoTouch Center scales indefinitely -easily manage networks with thousands of devices and incorporate new devices when you add them.

## Update distribution

Firmware image repository  
Cascading/satellite self replication and mirroring